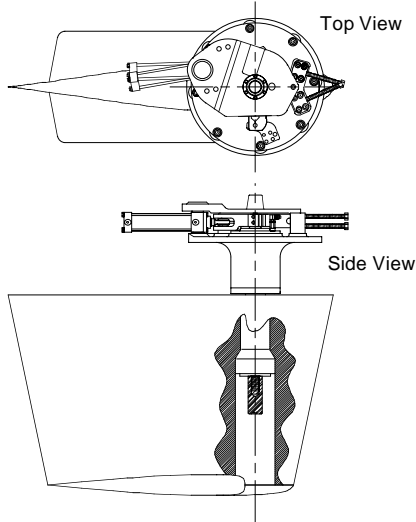


ACTUATOR – FIN SIZE COMPATIBILITY ⁽¹⁾

FIN	220	250	300	370	440
4.5	•	•			
6.0	•	•			
7.5	•	•	•		
9.0		•	•	•	
12.0			•	•	
16.0				•	•
20.0				•	•
26.0					•
6.0X	•	•	•		
7.5X		•	•		
9.0X			•	•	
12.0X				•	•
16.0X				•	•
20.0X					•

ASSEMBLY OVERVIEW

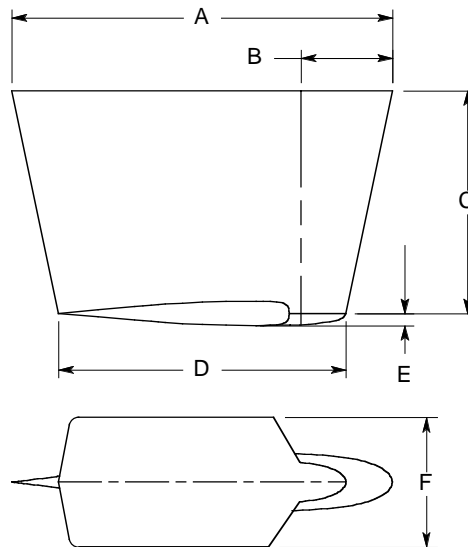


WINGLET FASTENERS ⁽³⁾

Fastener Code	Fastener	Qty	Tighten to ft-lb / (Nm)	Required Thread Lock Coating
A	3/8" -16	4	24 / (33)	Medium Strength
B	1/2" -13	4	50 / (50)	Medium Strength
C	1/2" -13	6	50 / (50)	Medium Strength


FIN DIMENSIONS ⁽²⁾

FIN Size	A		B		C		D		E		F		WINGLET ⁽³⁾
	Inch	(cm)	Inch	(cm)	Inch	(cm)	Inch	(cm)	Inch	(cm)	Inch	(cm)	Code
4.5	35.5	(90.2)	8.5	(21.6)	20.8	(52.8)	26.9	(68.3)	1.1	(2.9)	12.1	(30.7)	A
6.0	41.0	(104.1)	9.8	(24.9)	23.9	(60.7)	31.0	(78.7)	1.3	(3.3)	14.0	(35.6)	A
6.0X	53.6	(136.1)	11.7	(29.7)	23.9	(60.7)	43.8	(111.3)	1.9	(4.8)	19.8	(50.3)	A
7.5	45.8	(116.3)	11.0	(27.9)	26.7	(67.8)	34.7	(88.1)	1.5	(3.7)	15.7	(39.9)	A
7.5X	61.1	(155.2)	13.4	(34.0)	26.7	(67.8)	50.0	(127.0)	2.2	(5.6)	22.6	(57.4)	B
9.0	50.2	(127.5)	12.0	(30.5)	29.3	(74.4)	38.0	(96.5)	1.6	(4.1)	17.2	(43.7)	A
9.0X	69.8	(177.3)	15.3	(38.9)	29.3	(74.4)	57.0	(144.8)	2.5	(6.4)	25.7	(65.3)	B
12.0	58.0	(147.3)	13.9	(35.3)	33.9	(86.1)	43.8	(111.3)	1.9	(4.8)	19.8	(50.3)	A
12.0X	79.1	(200.9)	17.2	(43.7)	33.9	(86.1)	65.0	(165.1)	2.8	(7.1)	29.4	(74.7)	B
16.0	66.1	(167.9)	15.9	(40.4)	38.6	(98.0)	50.0	(127.0)	2.1	(5.3)	22.6	(57.4)	B
16.0X	88.0	(223.5)	19.3	(48.9)	38.6	(98.0)	72.0	(182.9)	3.8	(9.7)	22.6	(57.4)	C
20.0	75.4	(191.5)	18.1	(46.0)	44.0	(111.8)	57.0	(144.8)	2.4	(6.1)	25.7	(65.3)	B
20.0X	100.6	(255.5)	22.1	(56.1)	44.0	(111.8)	82.2	(208.8)	4.5	(11.4)	25.9	(65.8)	C
26.0	85.9	(218.2)	20.6	(52.3)	50.3	(127.8)	65.0	(165.1)	2.7	(6.9)	29.4	(74.7)	B



NOTES:

- Compatibility shown here is for actuator torque, and for shaft size to fin socket size. This matrix shows the range of fin sizes that can be used with each actuator. Other considerations will determine which fin size will be installed on a given vessel.
- Fins designated with "X" suffix are extended chord fins for use in Stabilization At Rest (STAR[®]) systems.
- Winglet column of Fin Dimension matrix shows fastener size code. Refer to Winglet Fastener Panel (page bottom left) for fastener details.

 ARCTURUSMARINE AMERICAN BOW THRUSTER		517-A MARTIN AVENUE ROHNERT PARK, CA 94928 (707) 586-3155 VOICE (707) 586-3159 FAX http://www.thrusters.com	
		TRAC Stabilizer Fins Fin Dimensions	
DRAWN RJP CHKD ISSUED REVISED 9/28/2005 DRAWING	DIMENSIONS ALL DIMENSIONS ARE INCHES UNLESS OTHERWISE NOTED	SCALE NOT TO SCALE	